

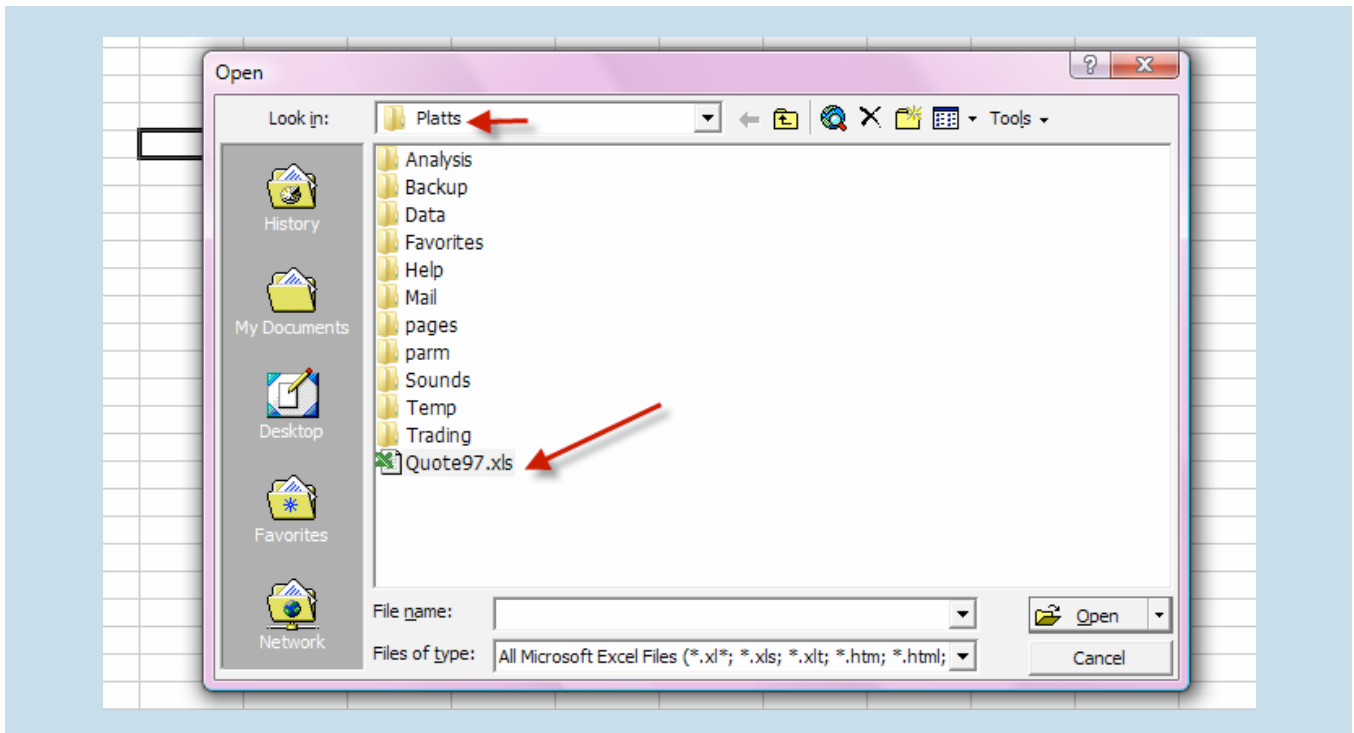
Setting up a DDE Link to export data from POTN into Excel

Windows XP – Excel 2003

POTN has a function to export of data using a DDE link.

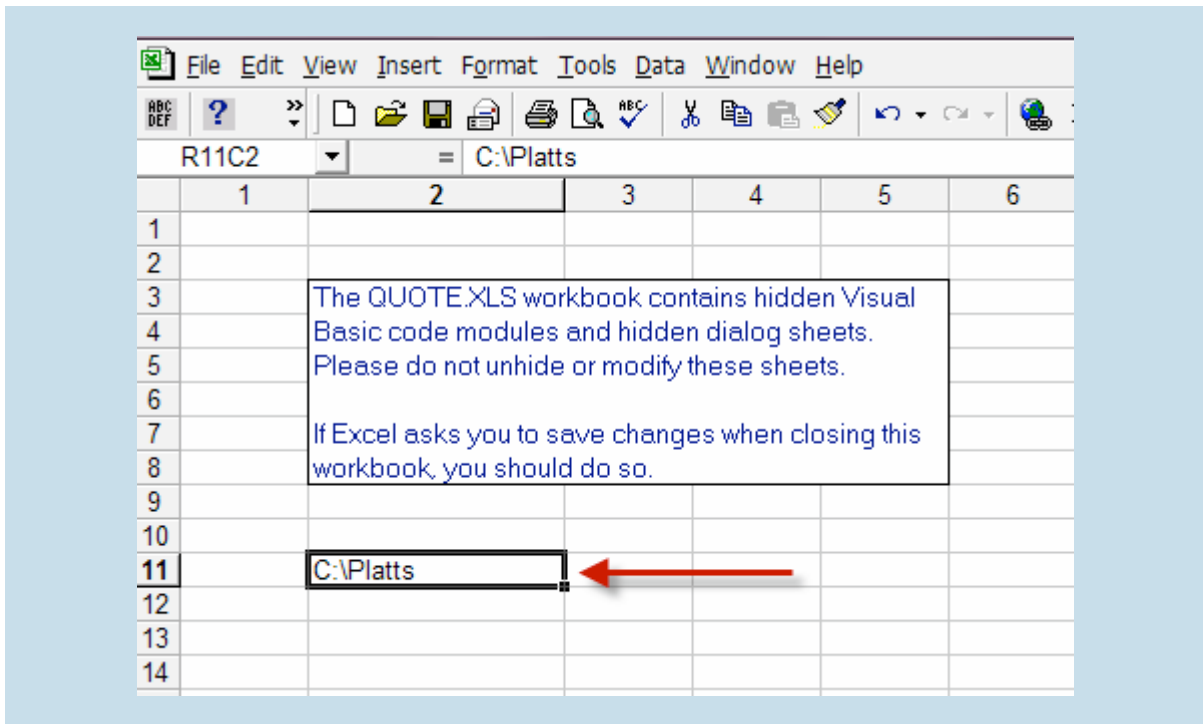
To set up the link:

Open Excel and then retrieve the Quotes97.xls file located in C:\Platts.



Please select the button that 'enables macros'.

The Quotes97 worksheet will be called up to the screen. Drop down 2 lines from the bottom of the text and add the path to your POTN program. Unless your setup is unique, the path will be **C:\Platts**.

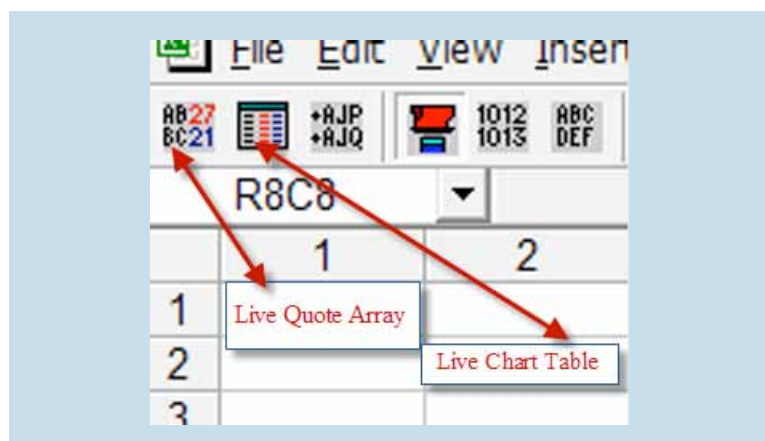


Save the Quotes97 file. In order to hide the Quotes97 file so it is not used by accident, insert a new worksheet in the file. **Insert > Worksheet**. Go back to the original sheet, using the worksheet tab at the bottom of the sheet. Once the original sheet (above) is visible, hide the sheet. **Format > Sheet > Hide**. Save Quotes97 again and then close the file. Note: Quotes97 should not be used for calculations or import. Create new Excel files to expand your work.

Installation of the POTN DDE -Excel Tool Bar:

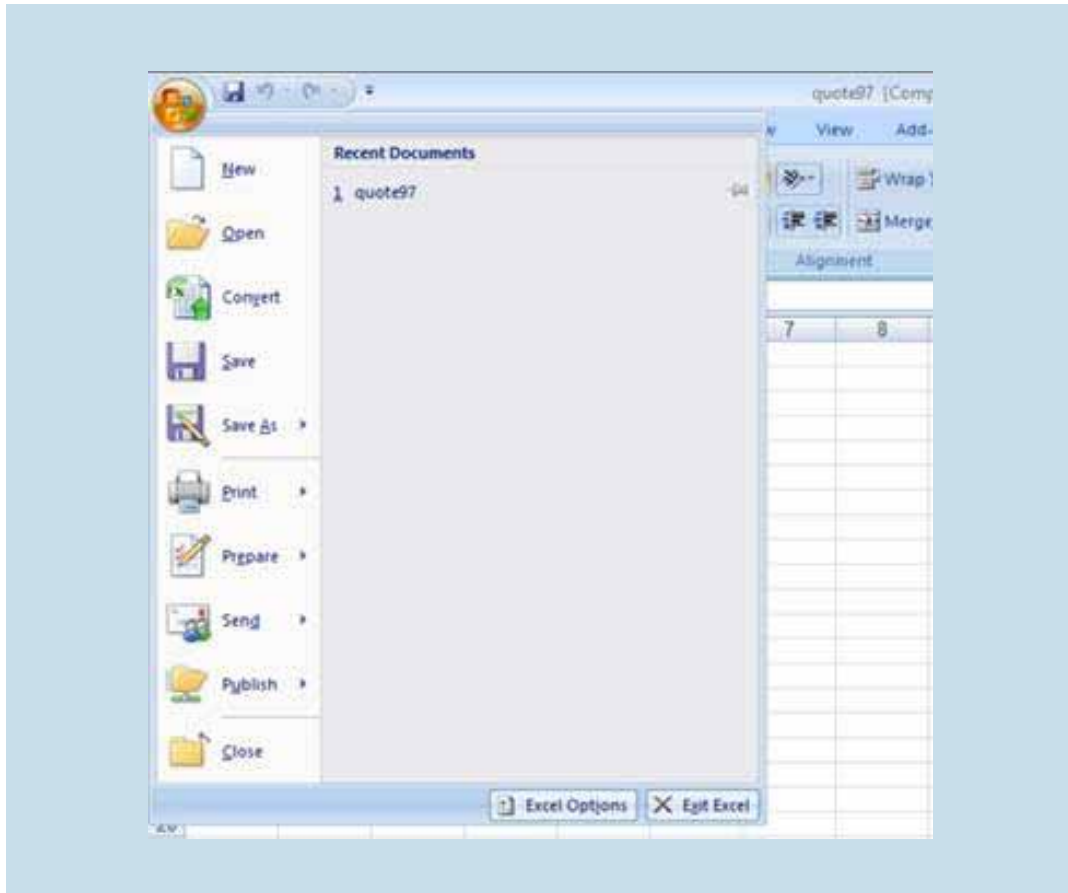
Select **Tools > Customize > Toolbars**. Look down the list and assure TAL Trading Tools is checked. You will note a new set of icons on the screen. This is the TAL DDE tool bar.

For these instructions we will use the Live Quote Array and The Live Chart functions. The icons are shown below.

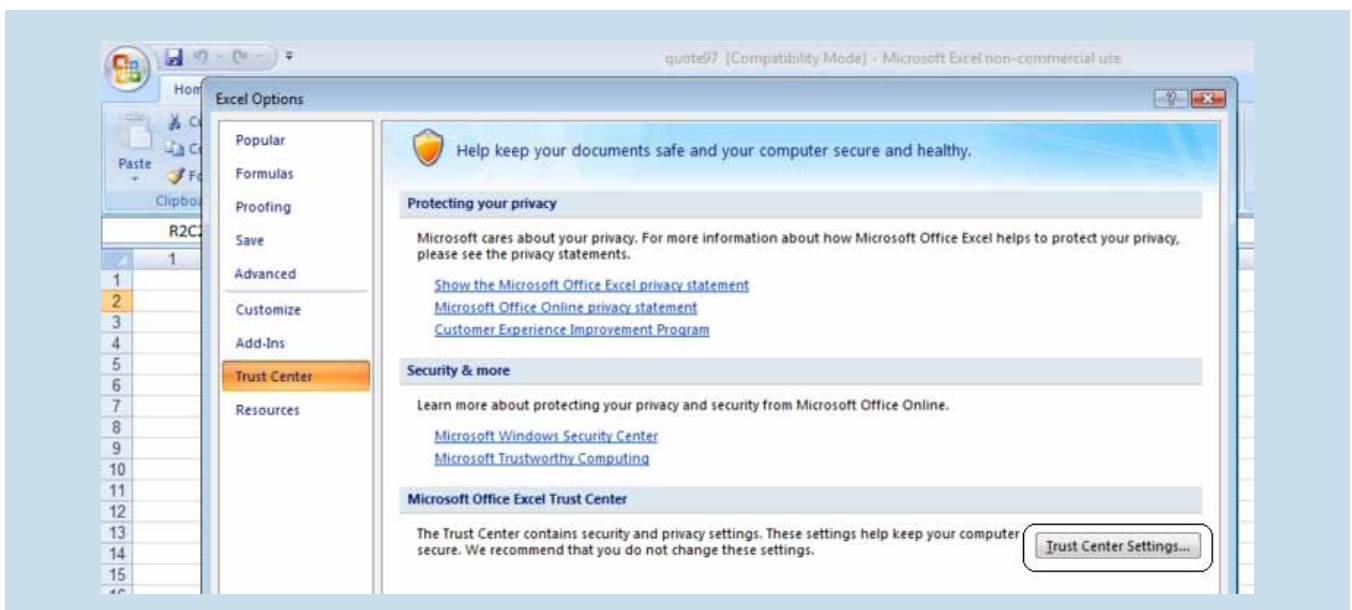




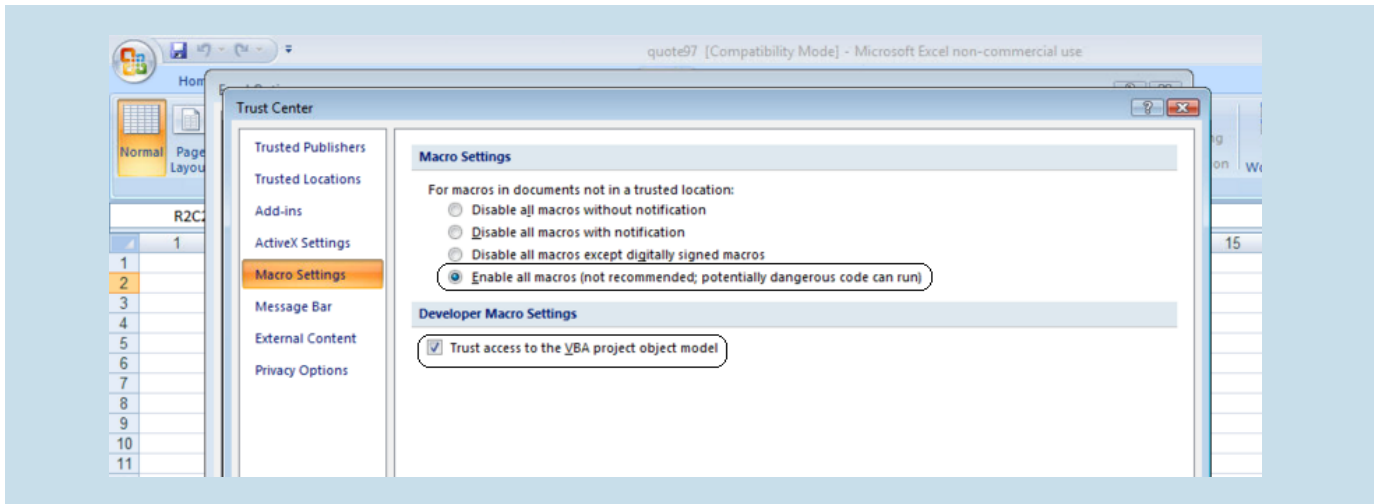
Activating DDE Toolbar with Excel in Windows 7
Open Excel and then Excel Options > File, Options



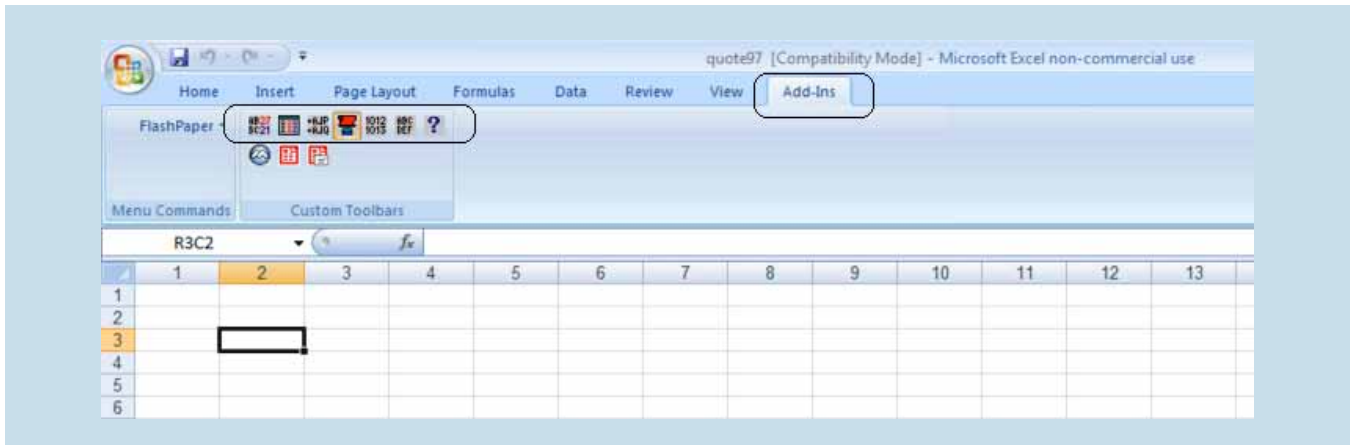
Click on the **Trust Center** button and then **Trust Center Settings**



Click on the **Macro Settings** button and then **Enable all Macros**, then below to **Trust Access to VBA project object model**

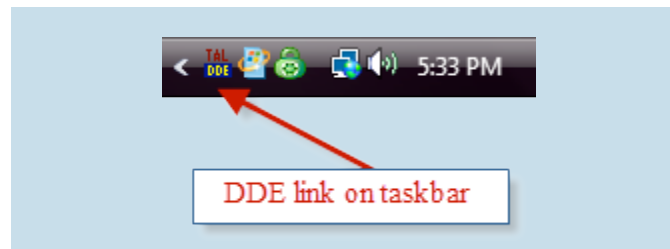


Quote97.xls macro functions are found in the Add-In tab.



Establishing the POTN / Excel link

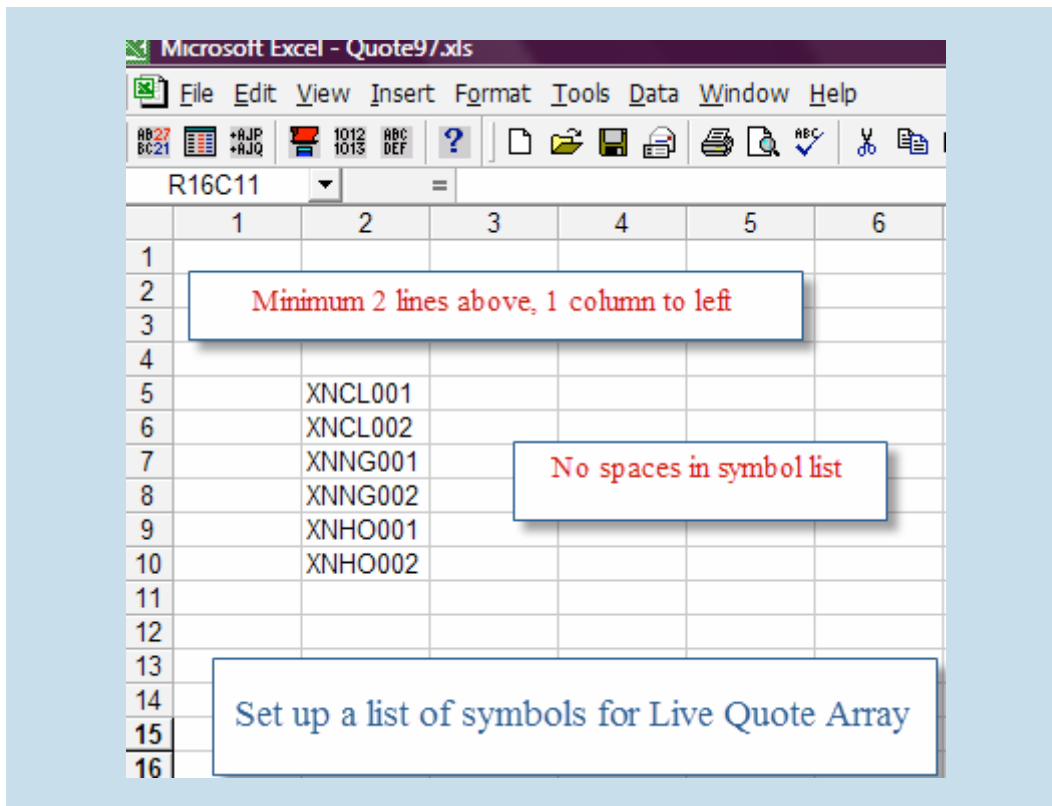
Now that the TAL tool bar is installed, the link will need to be established between POTN and Excel. In the Platts on the Net group under the Windows Program list find **TALDDE**. Click. It will now show up on the right side of your taskbar. You will be asked to enter the ID / Password to enable TALDDE and before the link drops to the taskbar. You may also want to drag a copy of this link program to your desktop for easier access.



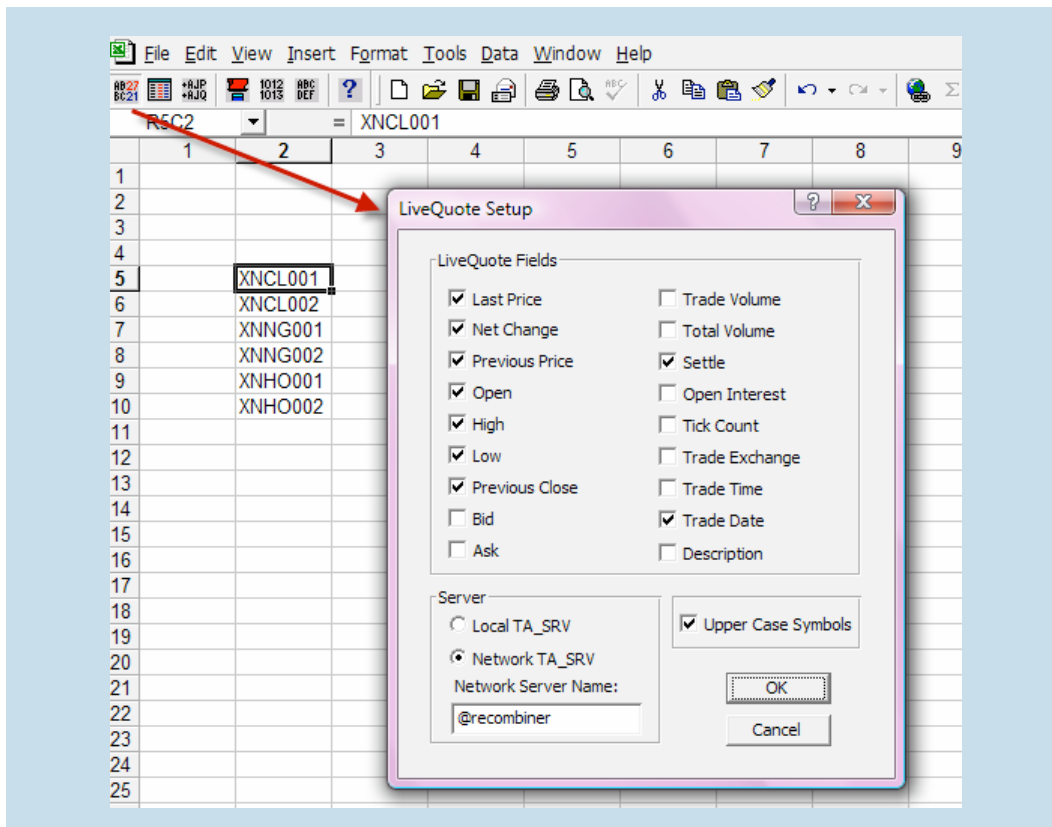
Live Quote Array

To display current values in a horizontal format use Live Quote Array. You will need to organize and input the symbols into an Excel sheet before the array is activated. Once an array is active, it cannot be edited. The array data must be deleted and reactivated. The symbol area must be contiguous with no blank lines. You also must leave at least 2 lines above and 1 column to the left of the symbol list.

When entering NYMEX symbols that begin with '/', you will need to precede the "/" with a single quote mark ('/XNCL001) to ensure Excel interprets this character as text and not a command.



Set the cursor on the top symbol and click the Live Quote Array icon in the toolbar.





Select the fields for information you would like to bring in. Not all data is available for different types of data.

	1	2	3	4	5	6	7
1							
2							
3			Price	High	Low	Date	
4							
5		XNCL001	8432	8520	8520	2/15/11	
6		XNCL002	8757	8757	8757	2/15/11	
7		XNNG001	3976	3970	3970	2/15/11	
8		XNNG002	4030	4030	4030	2/15/11	
9		XNHO001	27290	27290	27290	2/15/11	
10		XNHO002	27324	27324	27324	2/15/11	
11							

Sample of NYMEX exchange data

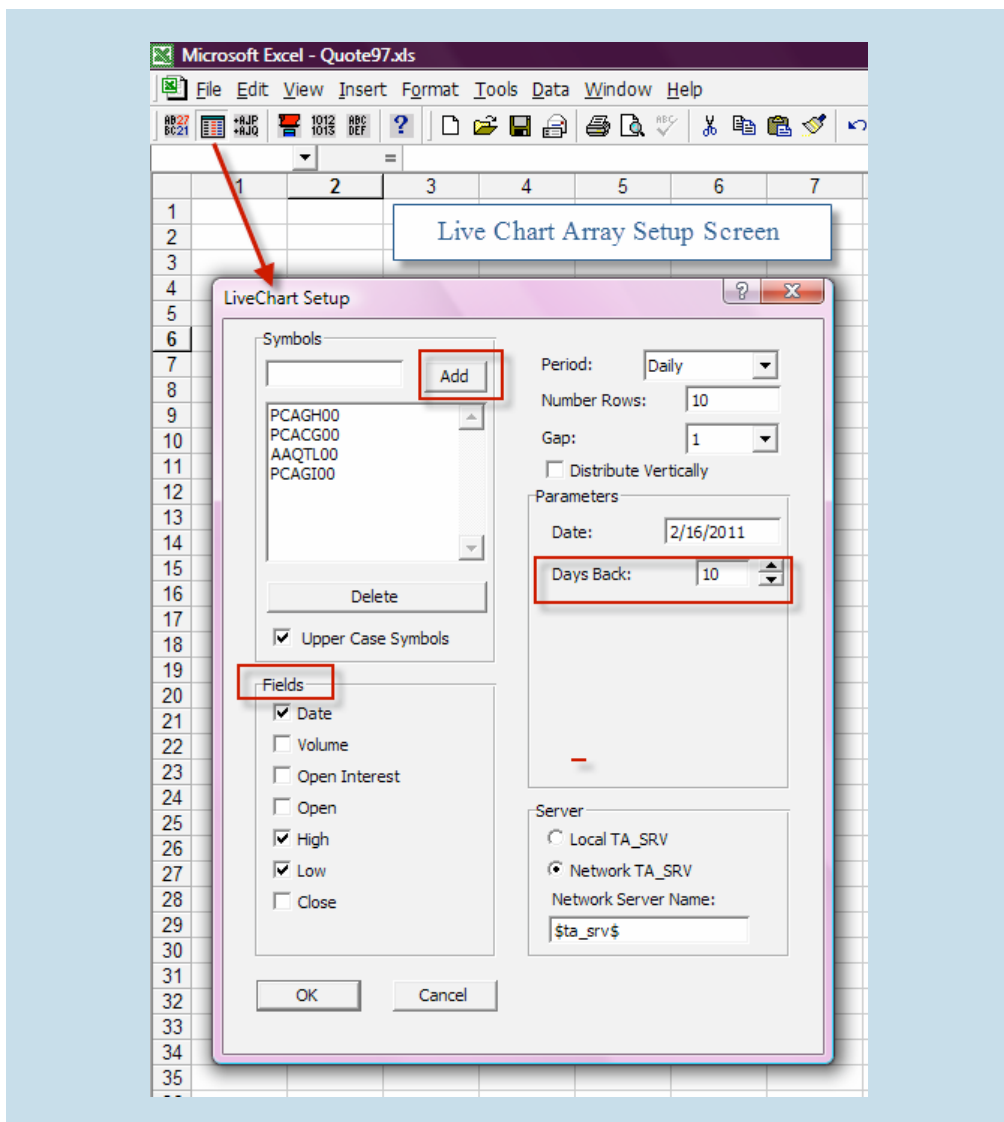
	1	2	3	4	5	6
1						
2						
3						
4			High	Low	Date	
5						
6		PCAGH00	86.94	86.82	2/16/11	
7		PCAGC00	92.39	92.27	2/16/11	
8		AAQTL00	92.64	92.52	2/16/11	
9		PCAGI00	94.84	94.72	2/16/11	
10						

Sample of Platts Data

Live Chart Array

This function will provide a table of historic data in Excel. For Live Chart array you simply select the icon to access the Live chart Setup dialog box. You can then input one or more symbols into the setup screen. Type the symbol into the box in the upper left and click **Add** to drop it into the box. Select the desired fields below. The Days Back can be adjusted to bring in as much data as required.

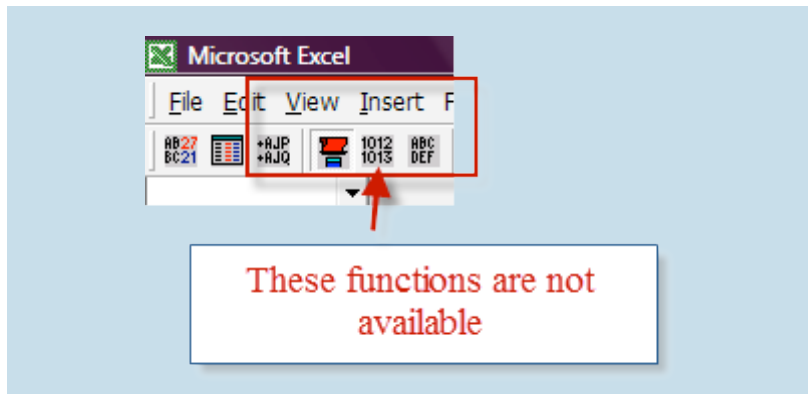
Note: 250 days equals approximately one (1) year.





Data format using Live Chart Array:

Sample Data - Live Chart Array																				
Symbol	PCAGH00		Loreto 1st Mth		Symbol	PCACG00		WTI Cushing 1st Mo		Symbol	AAQTL00		Ronsador FOB Brazil		Symbol	PCAG00		Vasconia 1st Mth		
Date	High	Low	Date	High	Low	Date	High	Low	Date	High	Low	Date	High	Low	Date	High	Low	Date	High	Low
2/3/11	88.47	88.35	88.35	89.7	89.88	2/3/11	89.01	89.01	2/3/11	93.17	93.05	2/3/11	95.52	95.4						
2/4/11	87.01	86.89	86.89	89.03	89.01	2/4/11	94.71	94.59	2/4/11	94.06	93.94									
2/7/11	88.95	88.83	88.83	87.44	87.42	2/7/11	93.5	93.38	2/7/11	94.15	94.03									
2/8/11	88	88.88	88.88	87.15	87.13	2/8/11	93.5	93.68	2/8/11	95	94.88									
2/9/11	88.01	85.89	85.89	88.83	88.81	2/9/11	93.78	93.64	2/9/11	96.11	95.99									
2/10/11	85.56	85.44	85.44	86.68	86.66	2/10/11	93.61	93.49	2/10/11	95.66	95.54									
2/11/11	86.48	86.36	86.36	85.45	85.43	2/11/11	92.99	92.86	2/11/11	94.96	94.86									
2/14/11	86.59	86.47	86.47	84.94	84.92	2/14/11	93.24	93.12	2/14/11	95.19	95.07									
2/15/11	86.42	86.3	86.3	84.33	84.31	2/15/11	92.12	92	2/15/11	94.22	94.1									
2/16/11	86.94	86.82	86.82	84.99	84.97	2/16/11	92.64	92.52	2/16/11	94.84	94.72									



Note: Platts will assist in establishing the DDE link and assuring it is operational. Platts cannot build worksheets for clients and can only do preliminary troubleshooting of worksheets built by clients.